



St. Bertelina's Church of England Primary School

Autumn 2

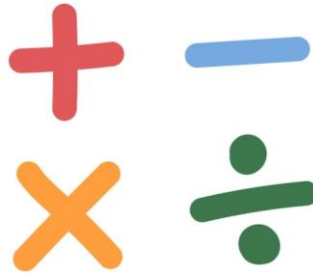
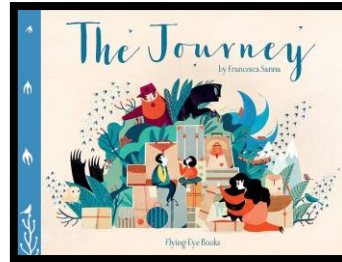
Dear Parent/Guardian,
Below you will find a summary of your child's learning in Y3/4 for the second part of our Autumn term.

- **Reading:** We will be looking at fictional and non-fictional texts as well as poetry linked to rivers & mountains
- **Writing:** We will be writing a diary write linked to our book stimulus titled 'The Journey' by Francesca Sanna.
- **Maths:** Our focus will be on the four rules of number. Year 4 will also be studying Area
- **RE:** Why is Jesus described as the light of the world?
- **HeartSmart:** Don't Forget to Let Love in
- **Geography:** What are rivers and how are they used?
- **DT:** Food Technology - biscuits
- **P.E:** Gymnastics & Invasion Games

Your child will also be concentrating on:

- Neat handwriting, presentation and correct use of punctuation.
- French on a Monday with Madame Lila.

These are the main areas of learning, not the total of what will be covered.



Dates to remember:

- 11th-15th November: Anti Bullying Week
- 14th November: Anti Bullying Theatre Production
- 15th November: Children in Need
- 15th November: Flu immunisations
- 12th-13th December: KS1 Christmas Production
- 16th-18th December: KS2 Christmas Production
- 19th December: Party Day
- 20th December: Church Service at St. Bert's Church / Finish at 12noon (end of term)

If you have time to help, you could:

- Ensure that your child's white & named P.E kit is always in school. Both classes have two P.E sessions each week (one indoor & one outdoor). *Your child will need trainers for outdoor PE.*
- Please make sure your child has 2 fountain pens (blue) and spare cartridges every day.
- Remember your red gel pen & ruler to underline.
- Encourage your child to read daily and we will continue to teach the children how to record two reading diary comments each week. (Use the ten prompts at the front of the reading diary to improve the quality of comments and avoid monotony). *Please feel free to write comments in the diary yourself to provide evidence of home reading.*
- Weekly spelling tests will take place on a **Tuesday**. In addition to words being sent home each week, half termly spelling lists are also published on Google Classroom
- Homework can be found on Google Classrooms every **Thursday** and is due in on the following **Monday**. *Please ensure that homework handed in each Monday because we mark it that day on class.*

Thank you for your support.
Mr. O'Neill & Mrs. Chriscoli